

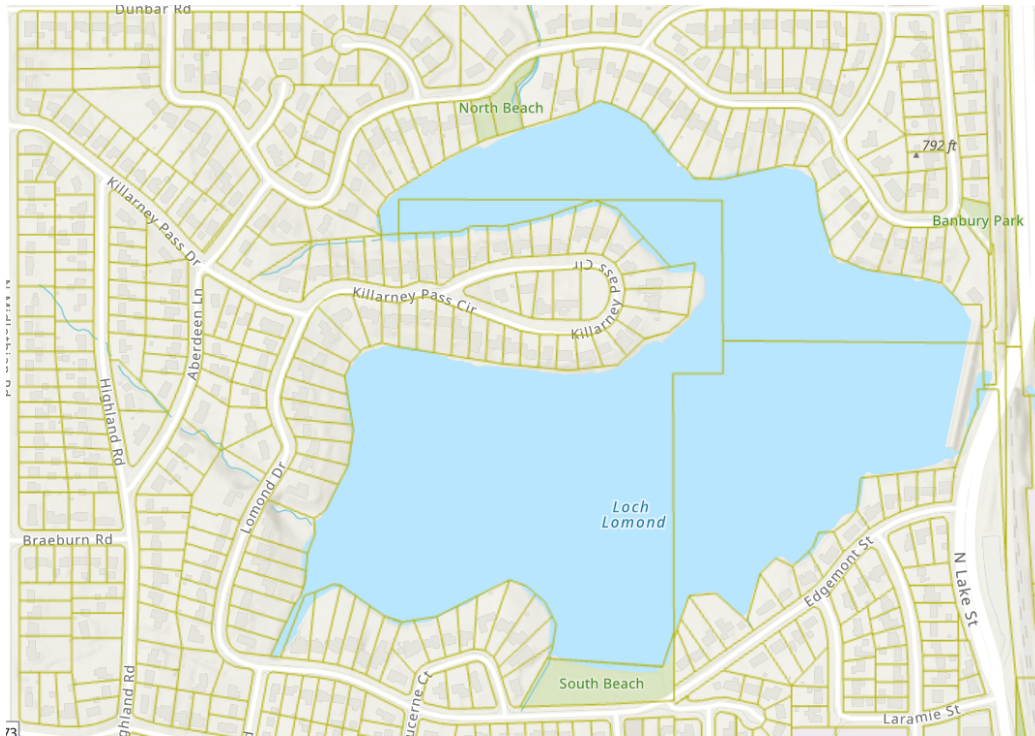


Loch Lomond History via Maps

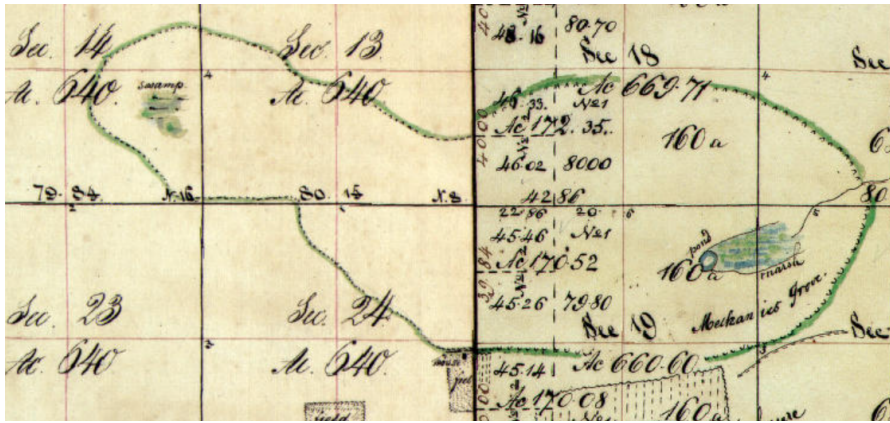
1840-2022

LLPOA Lake Committee - 2023

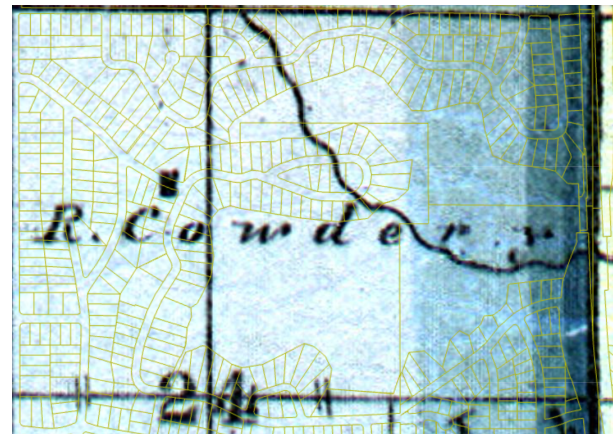
Source of Information - Lake County: <https://maps.lakecountyil.gov/taxparcelviewer/>



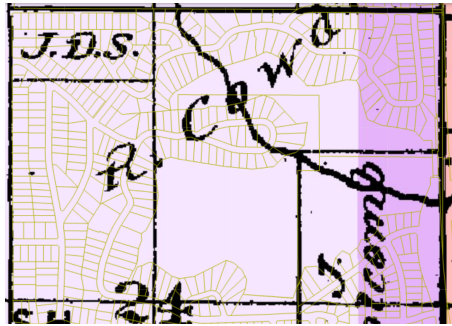
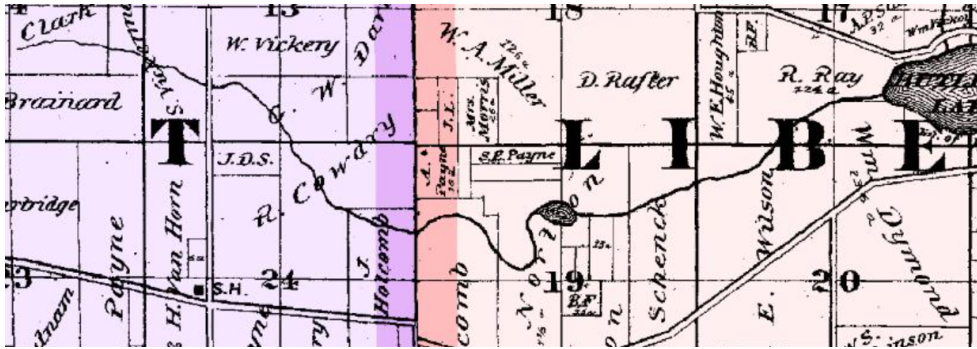
1840



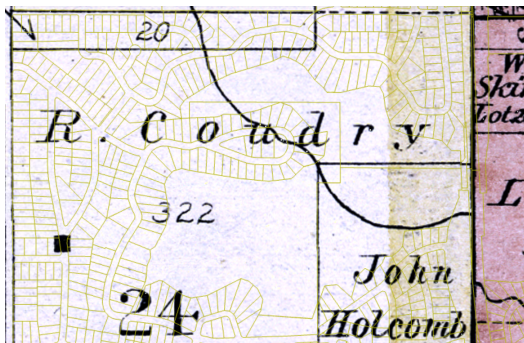
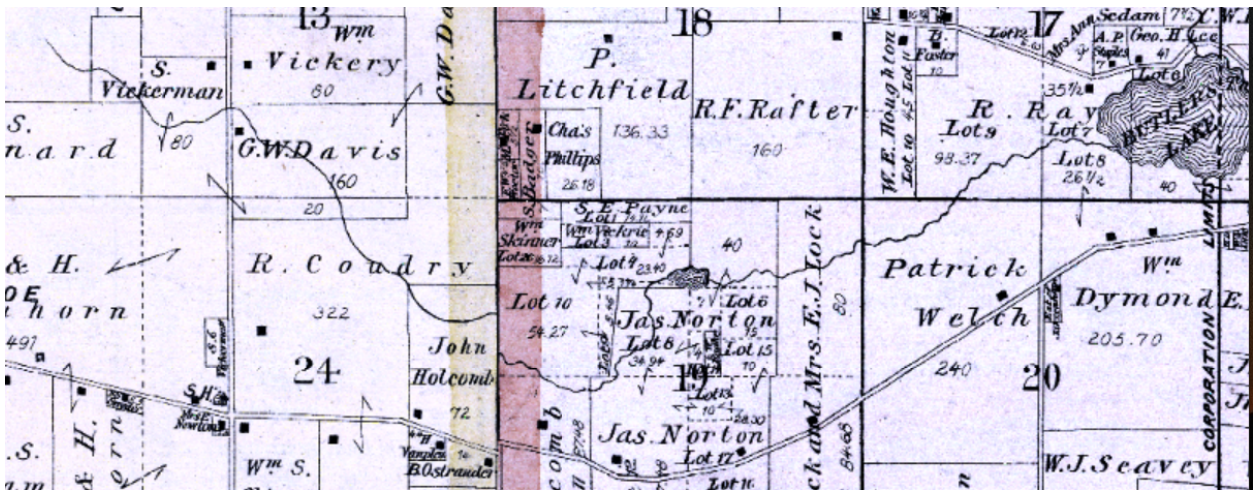
1861



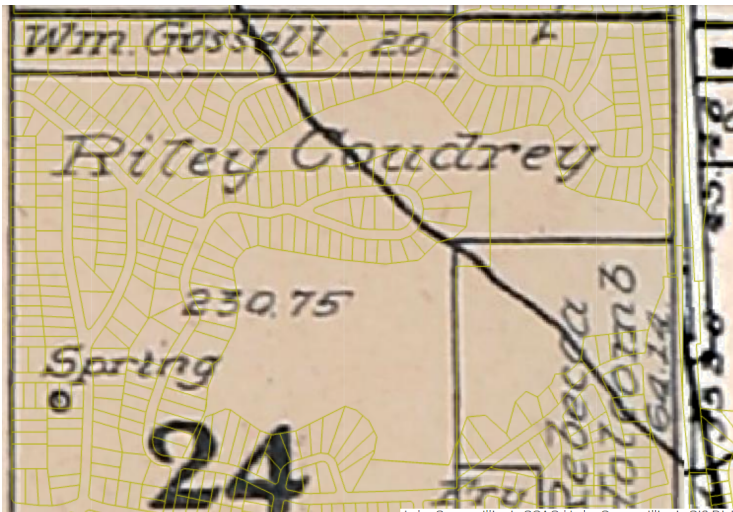
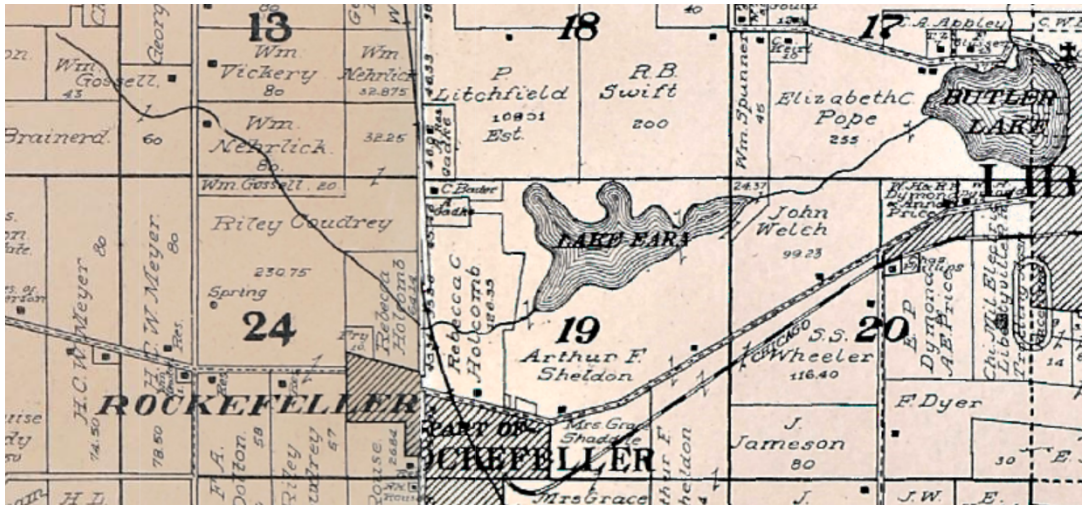
1873



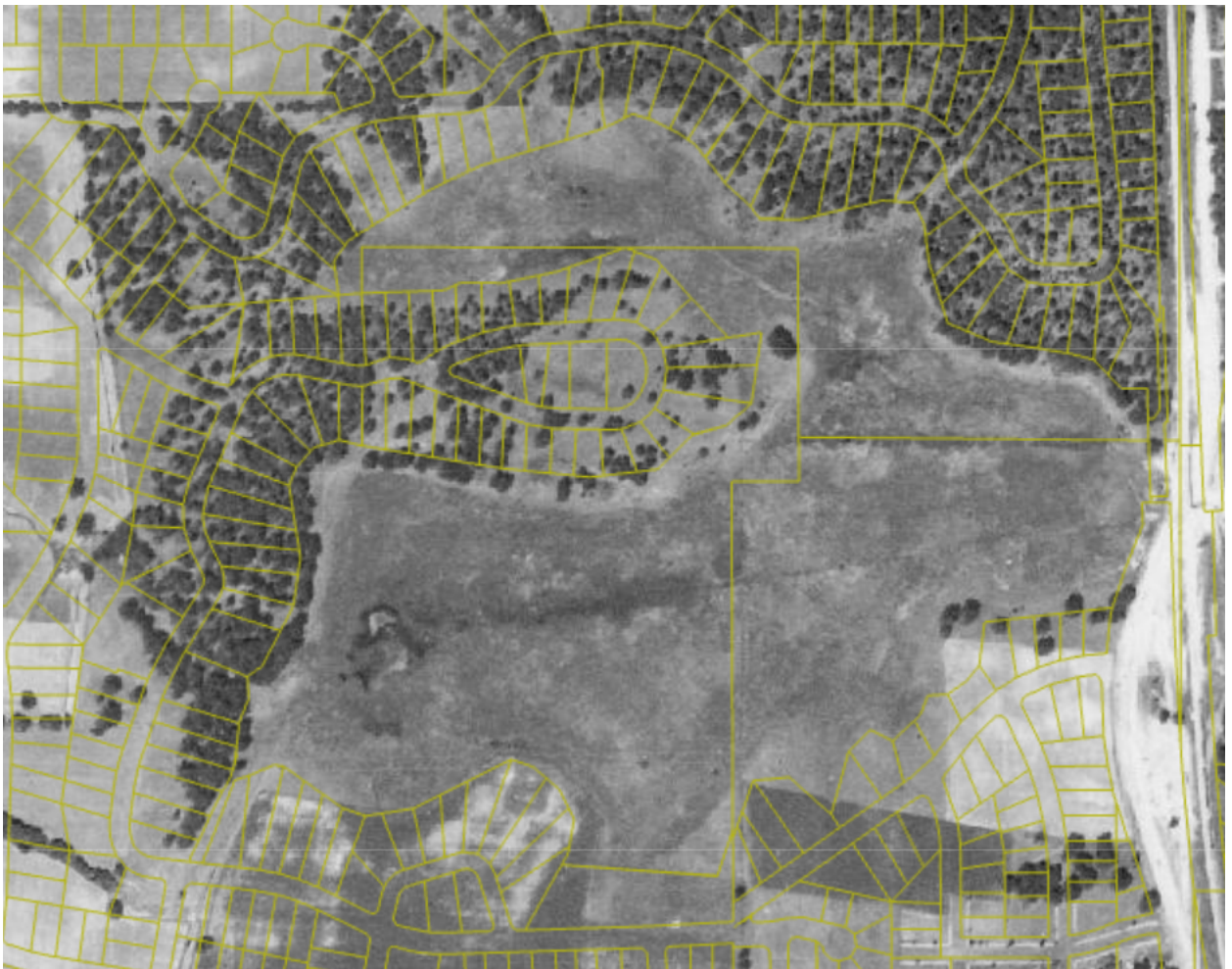
1885



1907



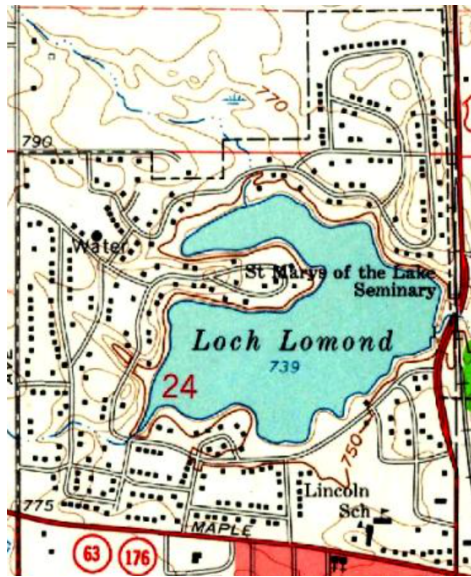
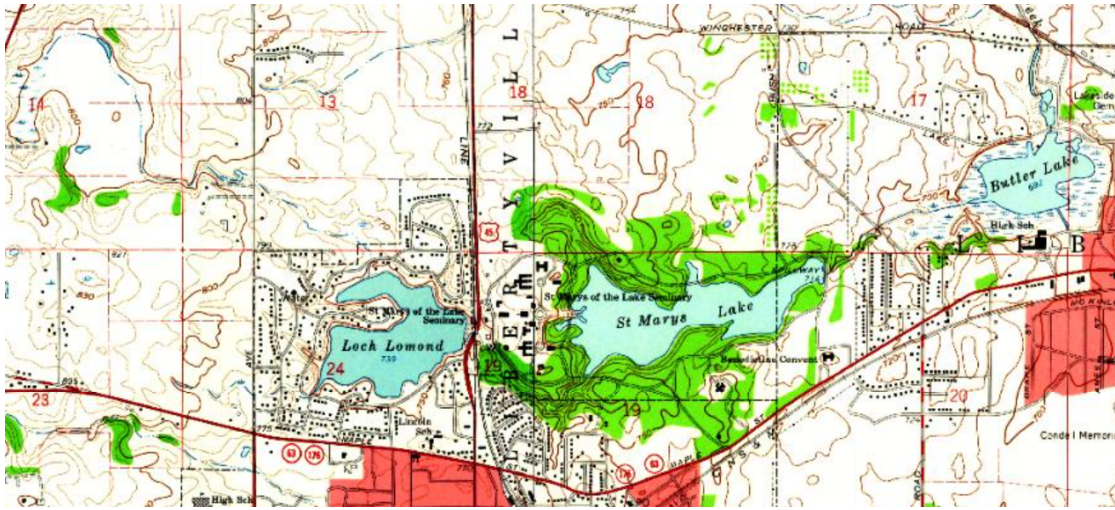
1939



1946



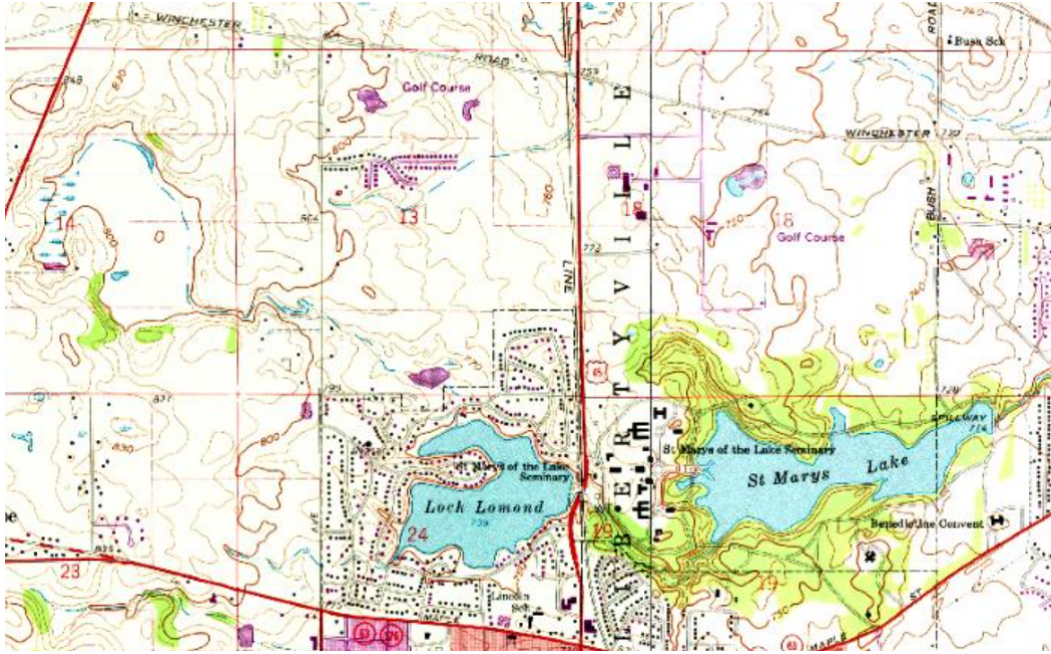
1960



1961



1972



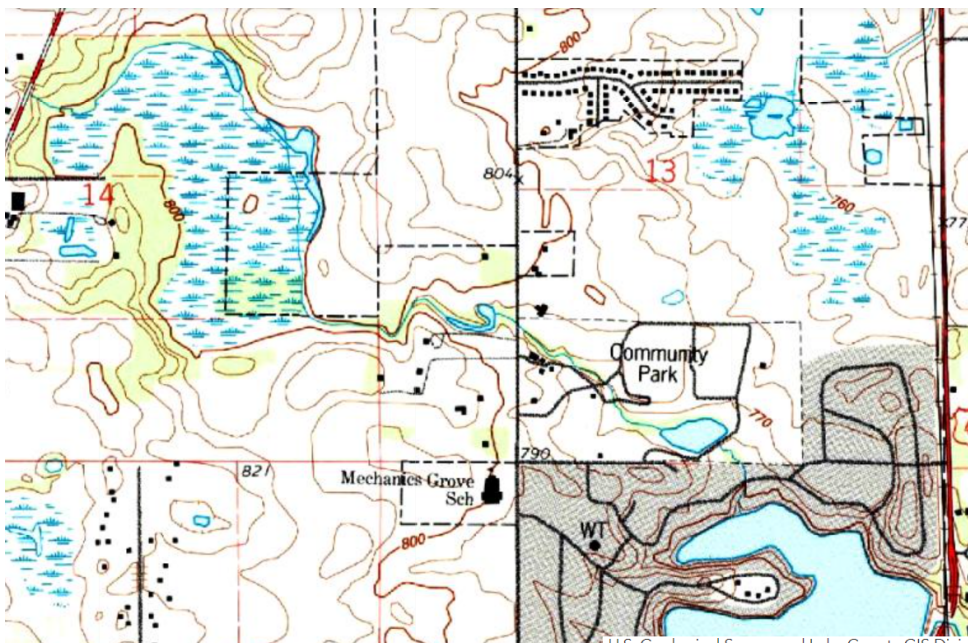
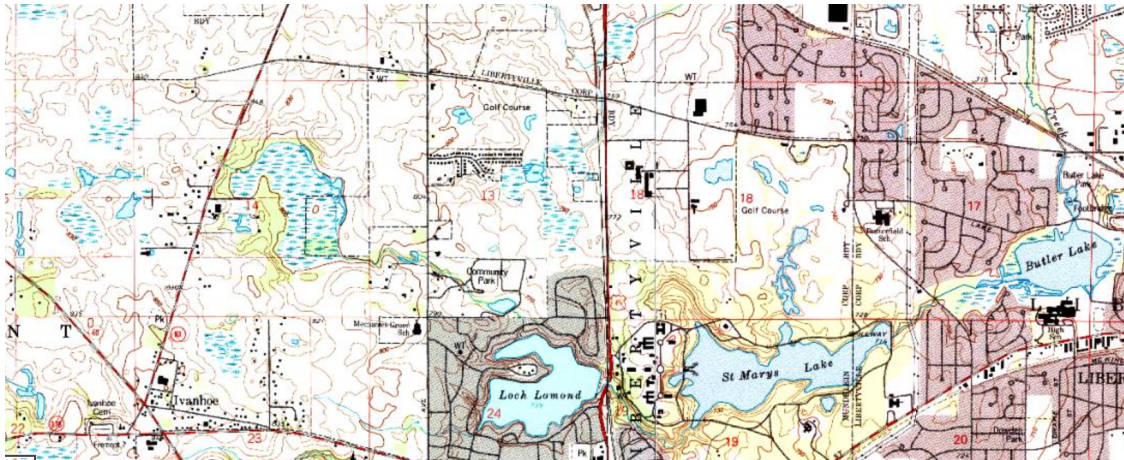
1974



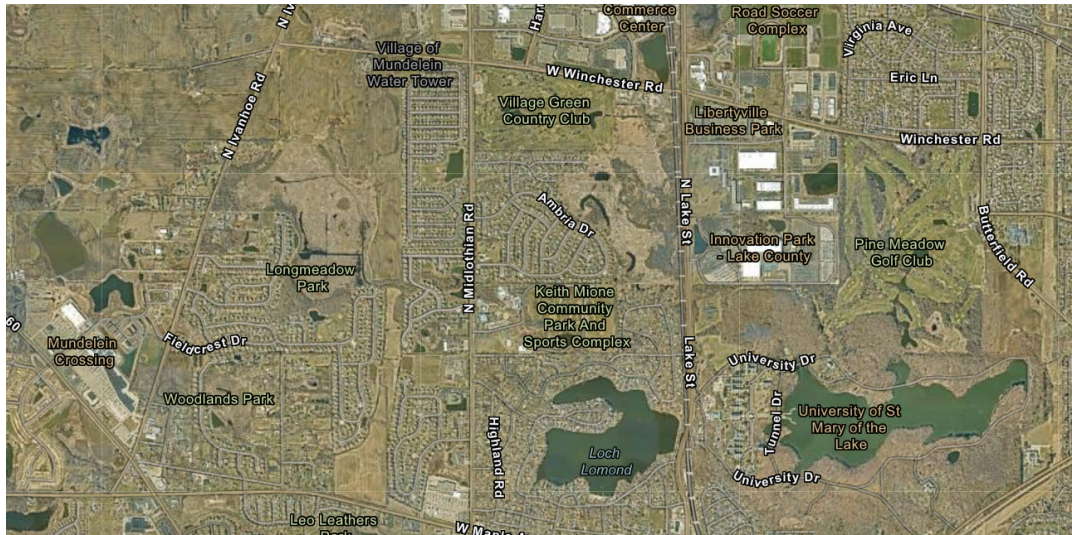
Lake County, Illinois



1993

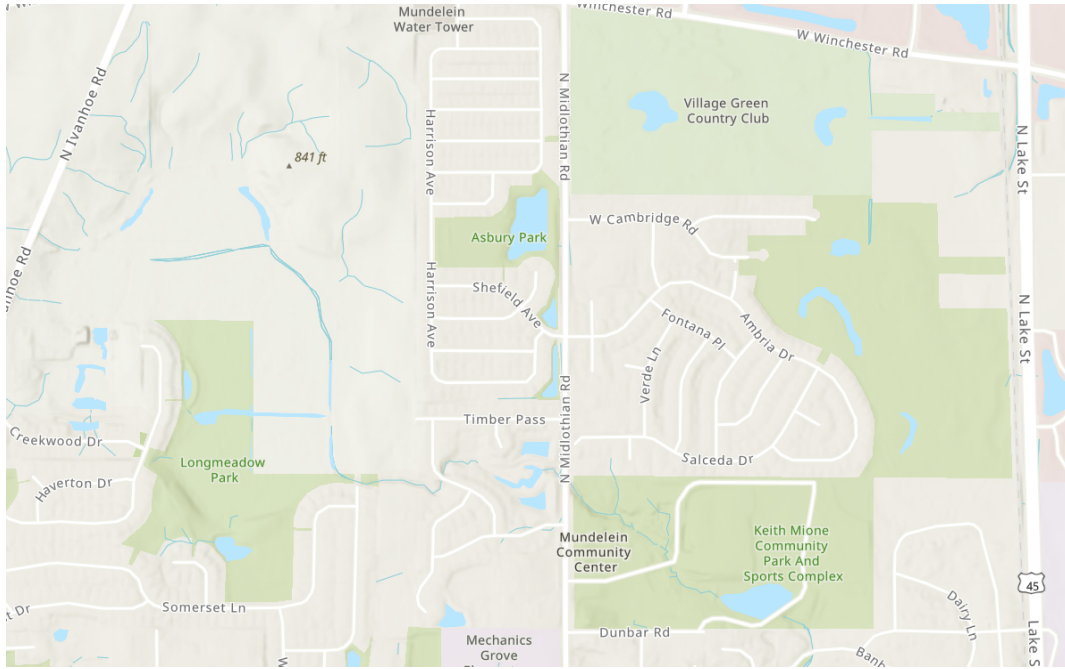


2022

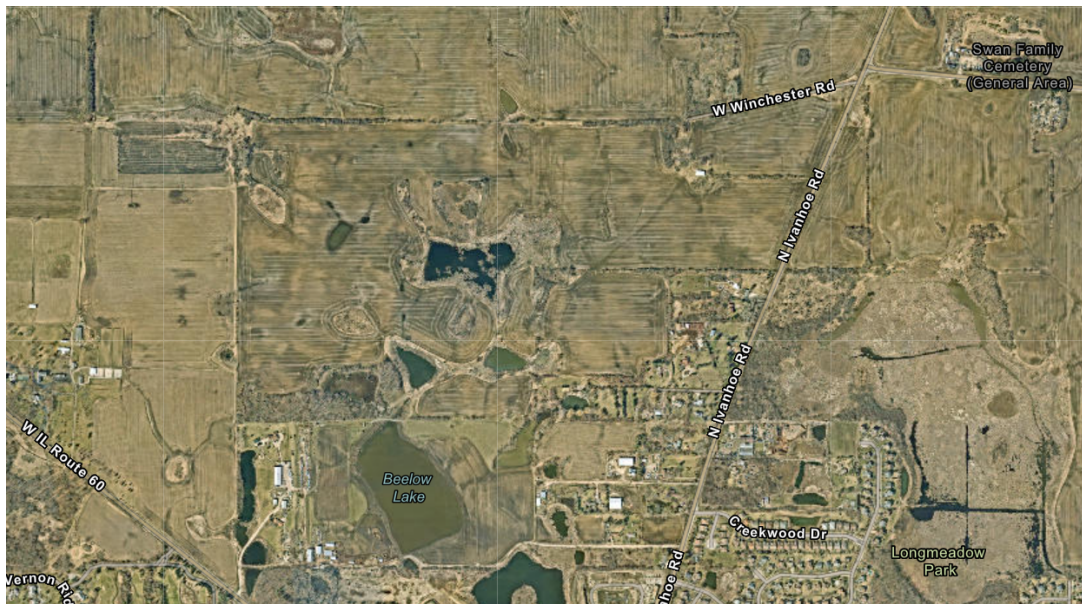


Water Inlets to Loch Lomond

Bull Creek is the Primary and Major Inlet of Water



Bull Creek West of Longmeadow



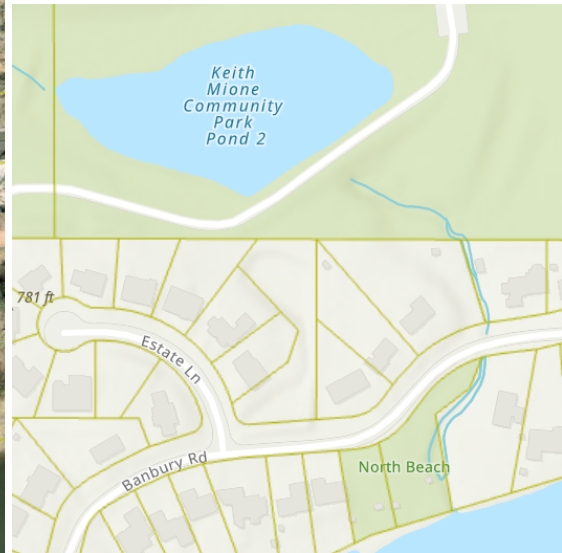
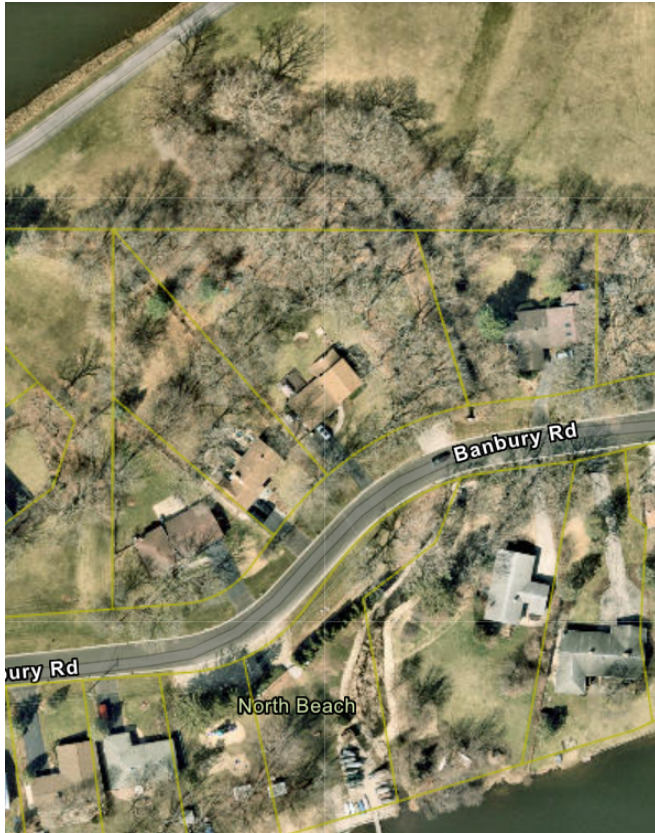
Bull Creek Longmeadow to Midlothian Road



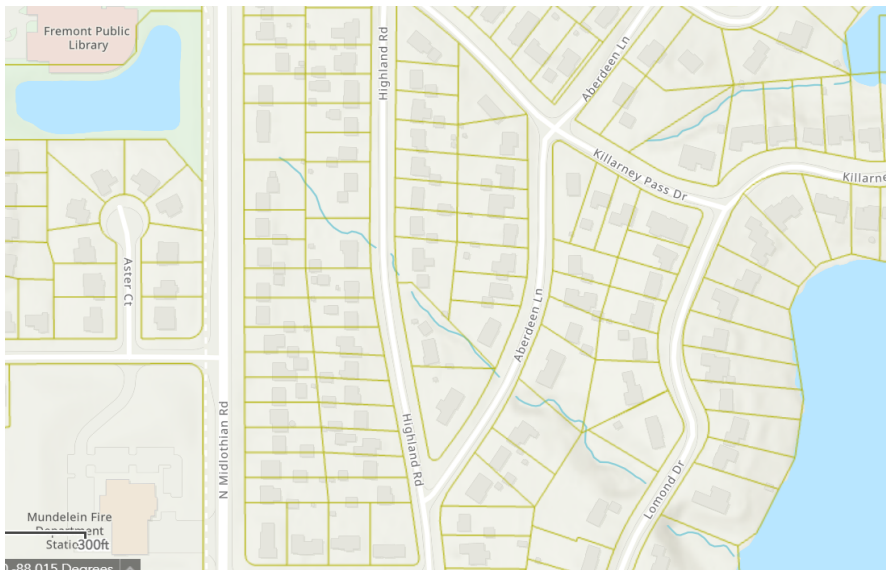
Bull Creek in Community Park



Bull Creek in Community Park to North Beach Inlet



**Library Retention Pond - Under Midlothian to:
1) Highland, Aberdeen, Lomond & 2) Killarney**



Firth and West Side of South Beach



Bull Creek Exit Over Dam, and Under Route 45 to St. Mary Lake

